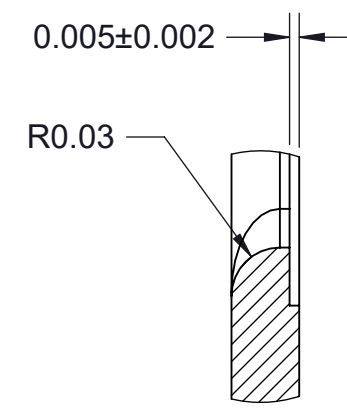
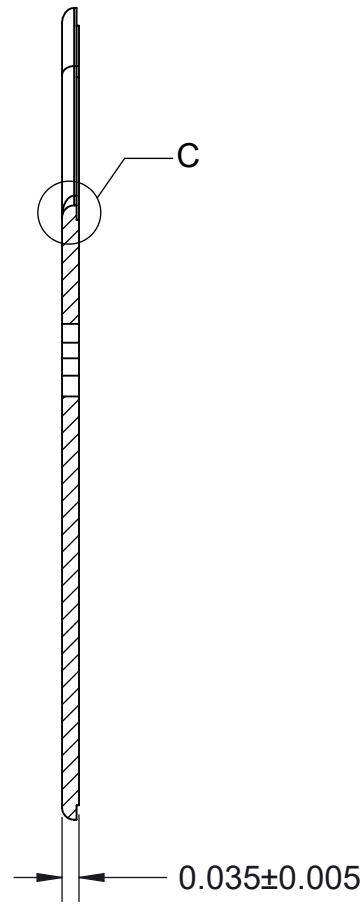


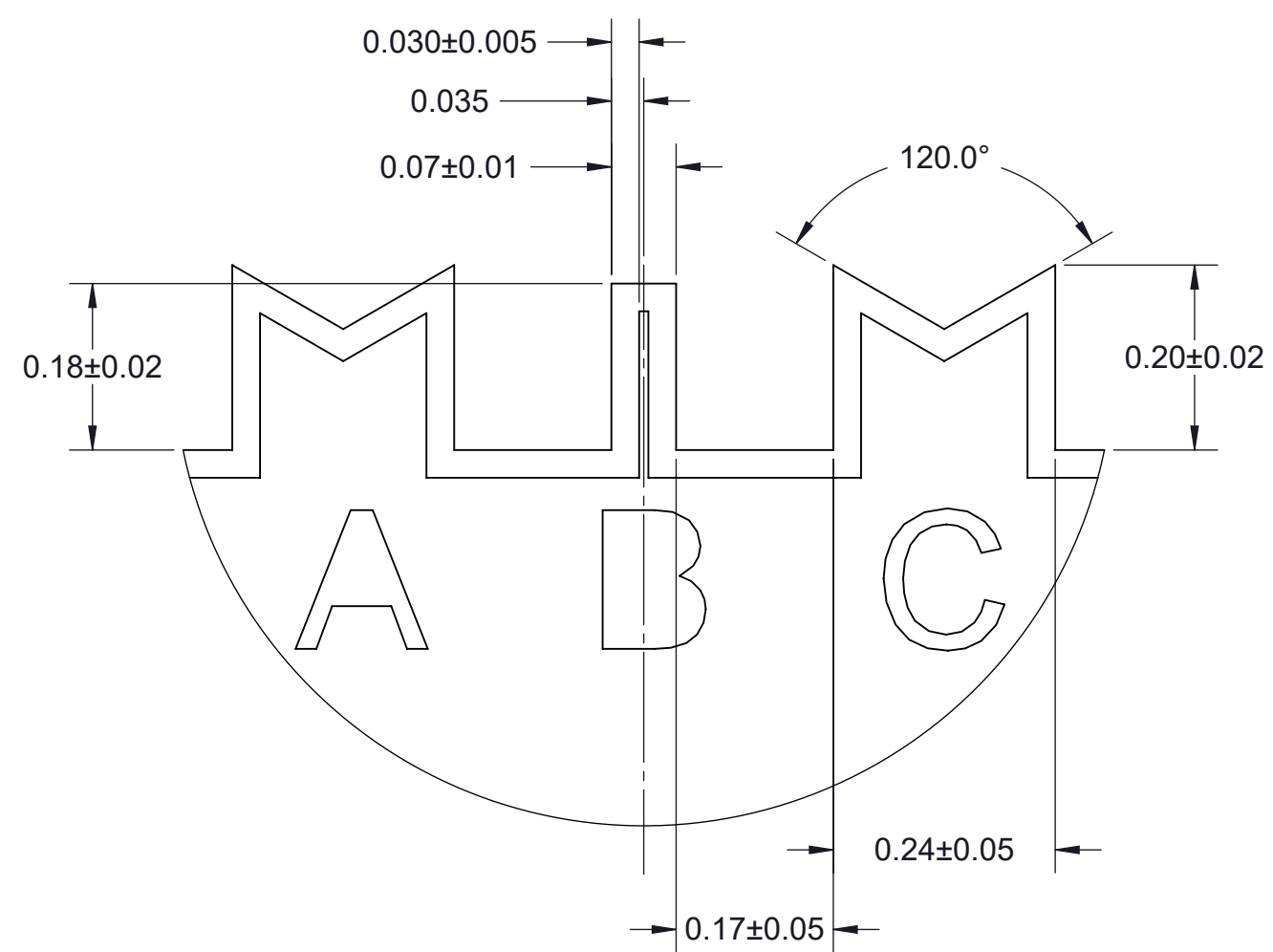
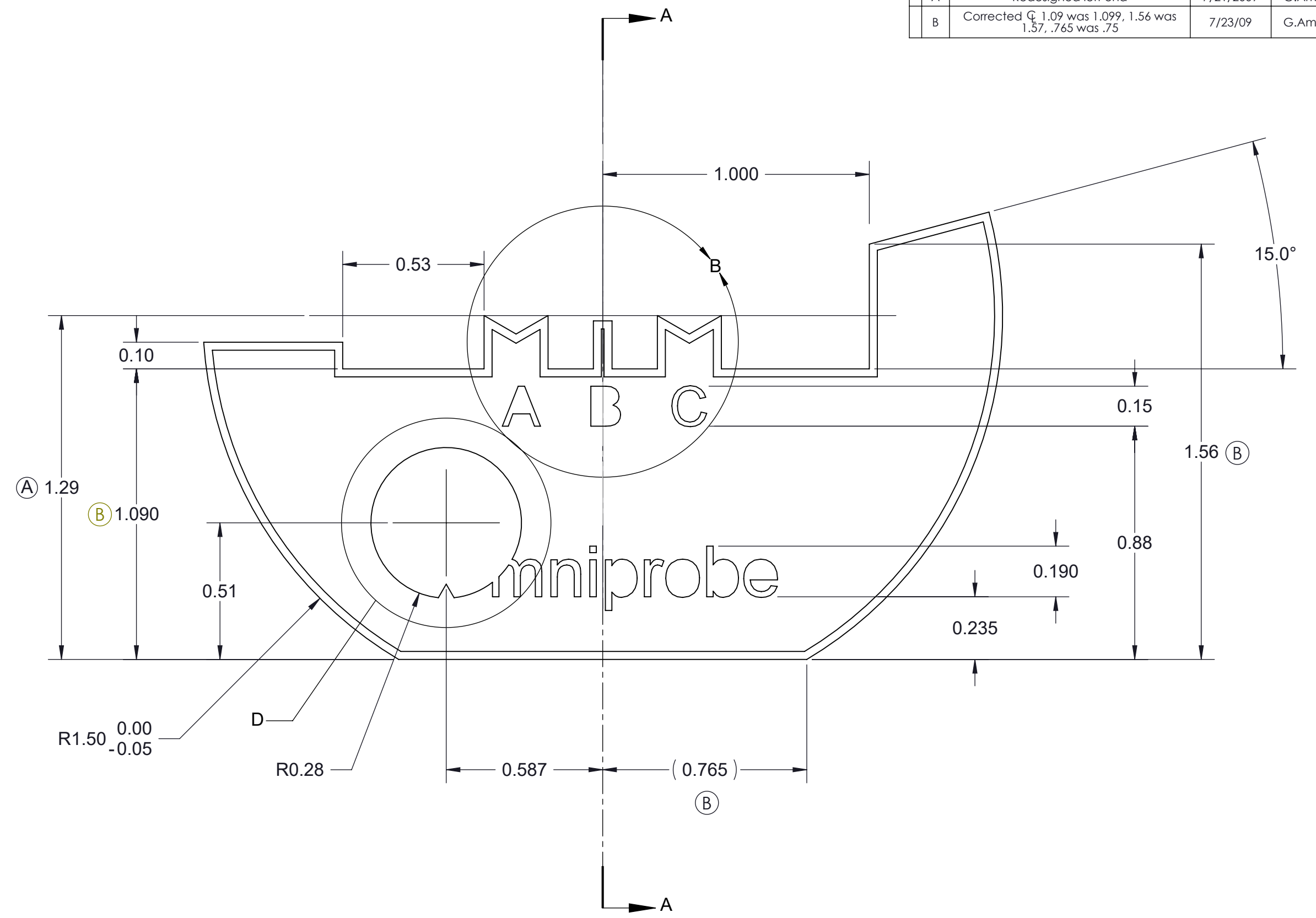
REVISIONS			
REV	DESCRIPTION	DATE	APPROVED
A	Redesigned left end	7/21/2009	G.Amador
B	Corrected G. 1.09 was 1.099, 1.56 was 1.57, .765 was .75	7/23/09	G.Amador



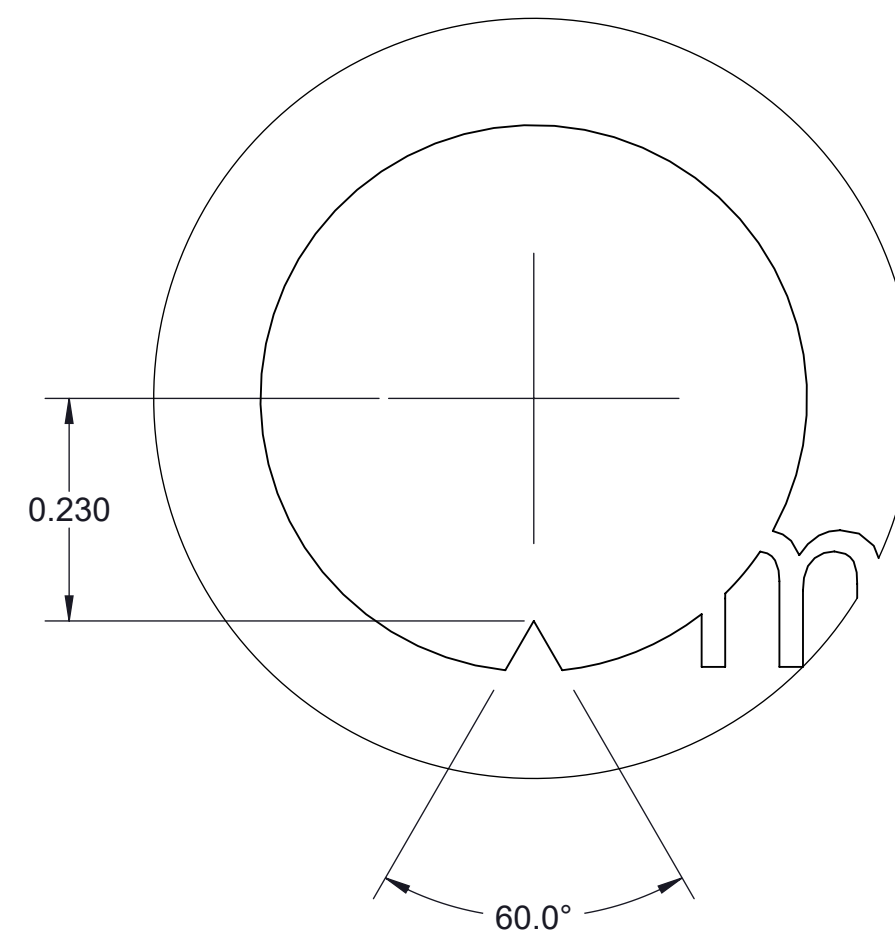
DETAIL C
SCALE 256 : 1



SECTION A-A



DETAIL B
SCALE 128 : 1



DETAIL D
SCALE 128 : 1

MODEL NAME: micro-TEM-grid-3Pcust			
MATERIAL: Copper		PROCESSES:	
TOLERANCES EXCEPT AS NOTED (DIMENSIONS IN MILLIMETERS)			
LINEAR	HOLES		MISCELLANEOUS
XXX±1	DIAMETER	TOLERANCE	ANGLES ± 1°
XX±25	0.30 - 3.18	+102 -025	TAPPED HOLE AXIS ± 1°
X ± 5	3.20 - 6.35	+127 -025	MACH DIA 0.004
	6.38 - 12.70	+152 -025	REMOVE BURRS AND SHARP EDGES
	12.73 - 19.05	+203 -025	
	19.08 - 25.40	+254 -025	
	25.43 - 50.80	+305 -025	
DRAFTSMAN: N. Patel			ROUGHNESS
DESIGNER:			THIRD ANGLE PROJECTION
CHECKER: 1/6/2010			 Omniprobe 3 Post Custom TEM Grid Side Access (shallow downset - Pyser) GRD-0001.07.01
ENGINEER: G. Amador			
APPROVED:			
RELEASED:			
SCALE: 64:1	SIZE: C	LO15	SHEET: 1 OF 1